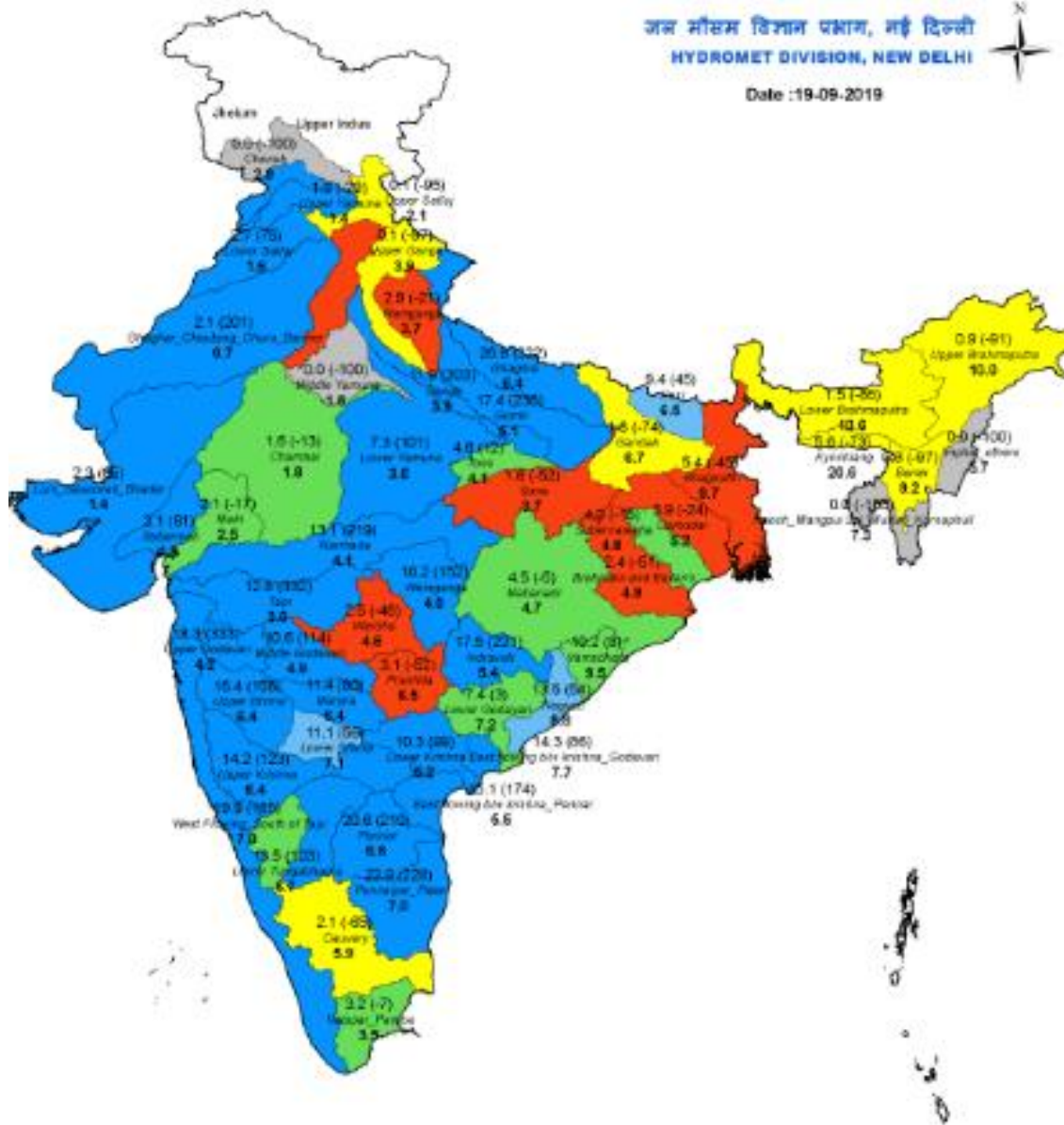




## Daily Flood Situation Report cum Advisories 19-09-2019

- 1.0 IMD information
- 1.1 Rainfall Situation
- 1.1.1 Daily River Basin wise Rainfall



Large Excess	Excess	Normal	Deficient	Large Deficient [-	No Data	No
[60% or more]	[20% to 59%]	[-19% to 19%]	[-59% to -20%]	99% to -60%]	[-100%]	Rain

Notes: a) Small figures indicate actual rainfall (mm), while bold figures indicate Normal rainfall (mm)  
b) Percentage departures of rainfall are shown in brackets.

विंग-2, द्वितीय तल  
पश्चिमी खंड-2, राम कृष्ण पुरम  
नई दिल्ली-110066  
दूरभाष-011-26106523,26105274,26182836  
ईमेल: [fmdte@nic.in](mailto:fmdte@nic.in)

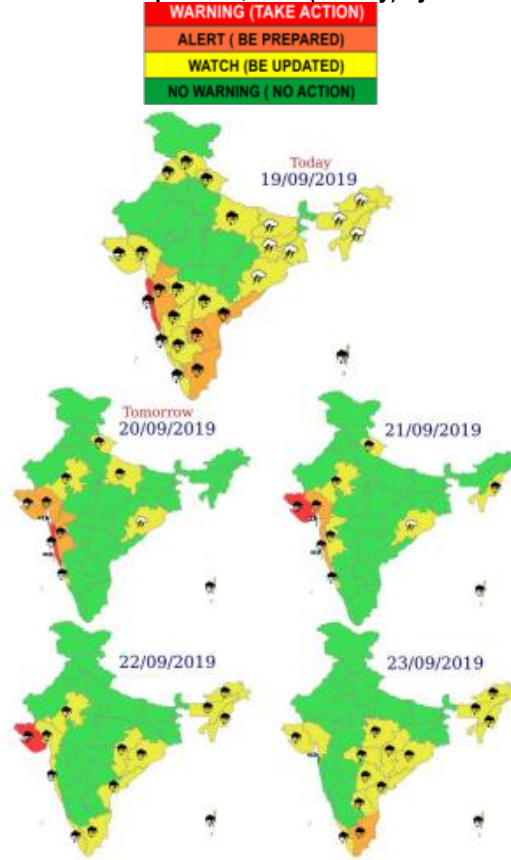
जल संरक्षण-सुरक्षित भविष्य



Wing-2, 2<sup>nd</sup> Floor,  
West Block-2, RKPuram,  
New Delhi- 110066  
Tele: 01126106523, 26105274, 26182836  
Email: [fmdte@nic.in](mailto:fmdte@nic.in)

Conserve Water – Save Life

1.1.2 Rainfall forecast for next 5 days issued on 19<sup>th</sup> September, 2019 (Midday) by IMD



2.0 CWC inferences

2.1 Flood Situations as per actual/ forecasted rainfall situation

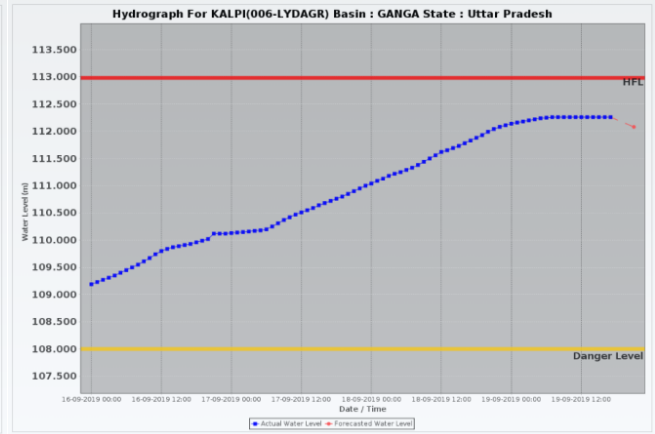
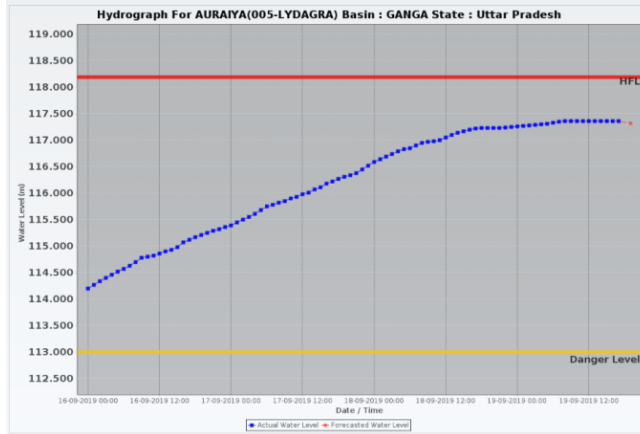
PART - I: LEVEL FORECAST		
S.No.	Flood Situations	Numbers of Forecasting Sites
<b>A</b>	Extreme Flood Situation: (Site (s) where the previous Highest Flood Level (HFL) is exceeded or equalled)	0
<b>B</b>	Severe Flood Situation: (Site (s) where water level is touching or exceeding the Danger Level but below Highest Flood Level (HFL))	36
<b>C</b>	Above Normal Flood Situation: (Site (s) where water level is touching or exceeding the Warning Level but below Danger Level)	24
Total number of sites above Warning Level ( A+B+C)		60
PART - II: INFLOW FORECAST		
Number of sites for which inflow forecasts issued: (Where Inflows are equal or exceed the specified Threshold Limit for a particular reservoir / barrage)		22

For details please visit:- <http://cwc.gov.in/sites/default/files/cfcr-cwcdfb-19092019.pdf>

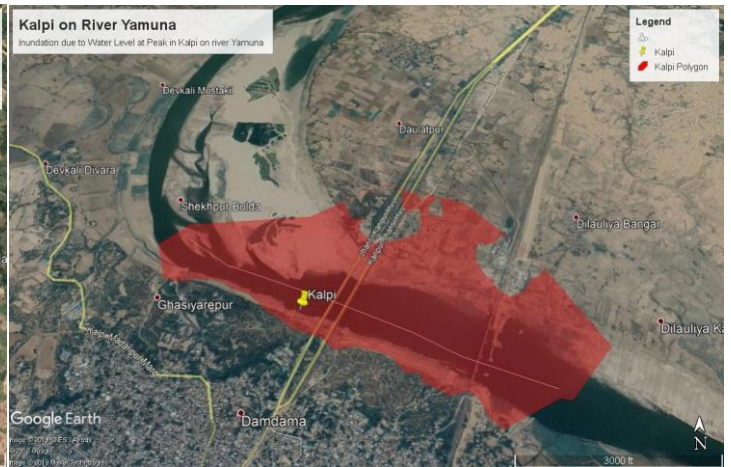


### 2.1.1 Ganga Basin

In association with rainfall for the past 10 days over Madhya Pradesh and heavy releases from various dams in Chambal & Betwa Basins, river Yamuna is rising all along its course from confluence of Chambal upto Allahabad in Uttar Pradesh. River **Yamuna** at **Auraiya** attained a peak level of 117.36 m which is 4.36 m above its Danger Level and is remaining steady at this level for the past 9 hours. It is likely to fall. River Yamuna at Kalpi in Jalaun District of UP has also attained a peak of 112.26 m which is 4.26 m above Danger Level. It is expected to fall slowly. Hydrograph is attached.



The Google Earth Inundation map showing the inundation at the peak level is given below:



Downstream of Kalpi, River Yamuna is flowing in Severe Flood Situation in districts of Hamirpur, Banda, Pratappur and Allahabad District in UP. This rise in river Yamuna is also being felt on river Ganga which is rising all along its course from Allahabad to Farakka. River Ganga at Varanasi in Varanasi District, Ghazipur in Ghazipur District, Ballia in Ballia District of Uttar Pradesh, Buxar in Buxar District, Dighaghat, Gandhighat & Hathidah in Patna District of Bihar is flowing in Severe Flood Situation and is likely to rise further. River Ganga at Allahabad, Mirzapur are also expected to flow in Severe Flood during next 1-2 days. Close watch on situation has to be maintained all along the course of these rivers.

### 2.1.3 Brahmaputra Basin

Due to continuous rain in catchment areas of River Brahmaputra and its tributaries, River Brahmaputra is in Severe Flood Situation in Jorhat District and its tributaries Jia-Bharali and Dhansiri (S) in Sonitpur & Golaghat District are also flowing in Severe Flood Situation. River Brahmaputra is flowing in Above Normal Flood Situation in Dibrugarh, Sonitpur and Dhubri districts of Assam and its tributaries, Beki, Puthimari, and Gaurang are also flowing in Above Normal Flood Situation. As the rainfall is expected to decrease, the levels may start falling slowly.

### 2.1.4 Konkan & Goa and Madhya Maharashtra

There is forecast of Heavy to Very Heavy in Konkan & Goa and Madhya Maharashtra for 19<sup>th</sup> to 21<sup>st</sup> September. This rainfall may again increase the flow in West Flowing Rivers and in Upper Krishna, Upper Bhima and Upper Godavari Basin. Since most of the reservoirs in these basins are very near to FRL, release from reservoirs have to be done with proper notification to all downstream areas and lower riparian states before releasing water. In view of extremely heavy rainfall forecast in Mumbai and its suburban areas, there may be chances of local Urban Flood like situation leading to water logging and drainage congestion.

## 2.1.5 Pennar & East Flowing Rivers between Pennar & Cauvery Basin

Due to very heavy rains in Kurnool, Cuddapah and Anantpur District for the past two days, river Pennar and its tributaries are rising. River Kunderu at Alladupalli in Cuddapah District of Andhra Pradesh rose sharply and is slowly falling. With forecast of heavy to very heavy rainfall in Rayalaseema for the next 24 hours, close watch has to be maintained in all the rivers in Pennar Basin. Somasila Dam is getting an inflow of around 90,000 cusec and is still having around 28 TMC for its Full Reservoir Level.

Extremely Heavy rainfall has occurred in the catchment areas of Poondi Reservoir in Chennai, but as the reservoir is dry no major impact is felt on the reservoir. There was no inflow into the dam. However the catchment areas of Kosasthaliyar received a basin average rainfall of around 106 mm today. There is forecast of heavy to very heavy rainfall for tomorrow in this basin also. However, as this is the first major spell of rainfall, no major inflow is predicted to be received.

## 2.2 Flood Affected Districts

<b>Rajasthan:</b>	Districts along the course of the rivers <b>Chambal and its tributaries</b>
<b>Assam:</b>	Low lying areas along river course of <b>Brahmaputra</b> in Jorhat, <b>Jia-Bharali</b> in Sonitpur, <b>Dhansiri (S)</b> in Golaghat District
<b>Uttar Pradesh:</b>	Districts along course of rivers <b>Chambal, Yamuna downstream of confluence with Chambal upto its confluence with Ganga</b> at Allahabad. <b>River Ganga</b> from Allahabad to Ballia, <b>River Ghaghra</b> from Barabanki to Ballia
<b>Bihar:</b>	Districts along course of <b>River Ganga</b> from Buxar to Bhagalpur.
<b>Jharkhand:</b>	<b>Sahebganj</b> District along river <b>Ganga</b>

## Flood Affected/ Alerted Districts in the Country

